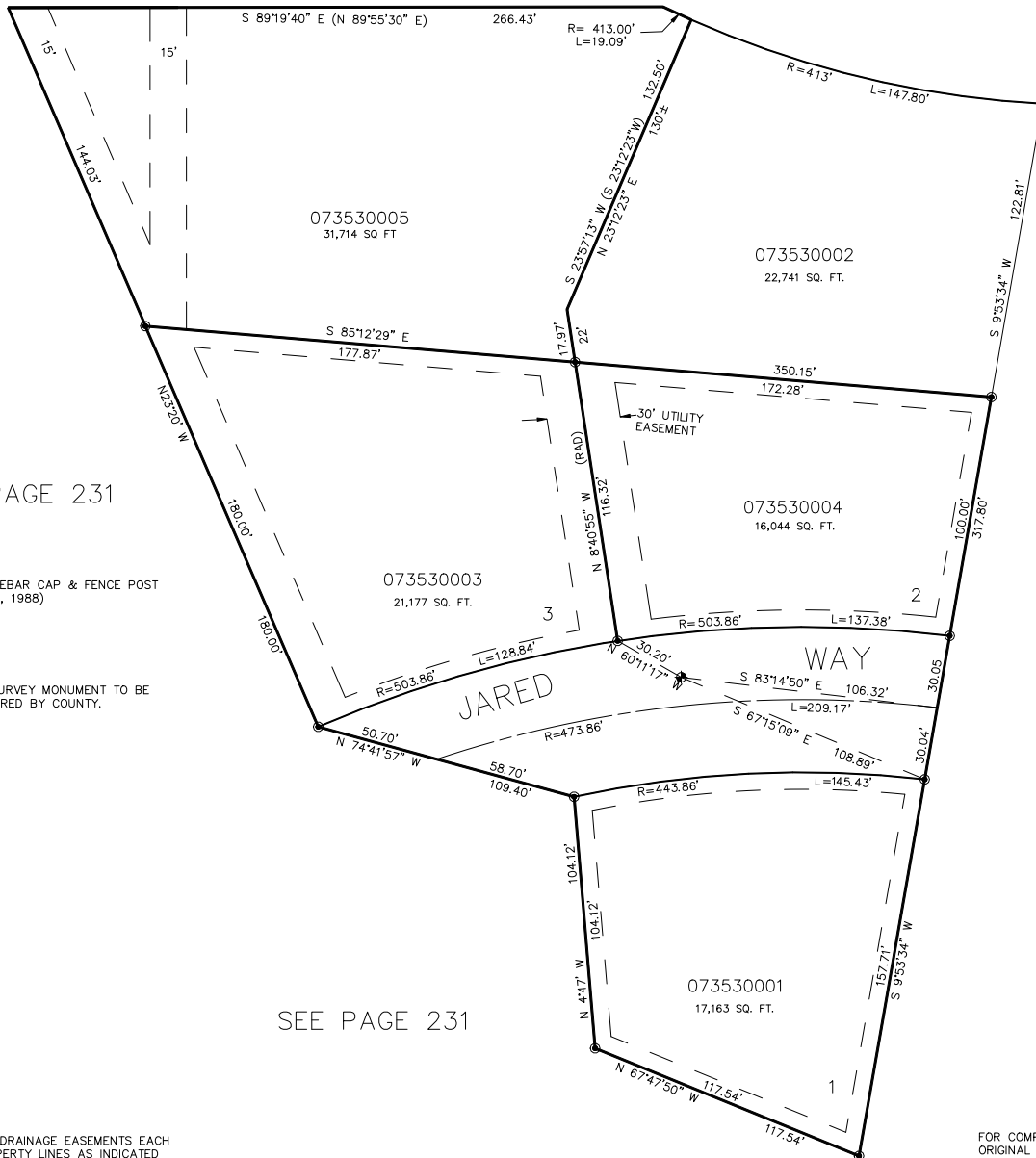


# PART OF THE N.W. 1/4 OF SECTION 23, T.5N., R.1W., S.L.B. & M. **COMBE SOUTH ESTATES NO. 1 AMD. LOT 3**

IN WEBER COUNTY  
 SCALE 1" = 40'

TAXING UNIT: 159

SEE PAGE 86



SEE PAGE 231

● = INDICATES REBAR CAP & FENCE POST SET (JUNE 7, 1988)

⊕ = INDICATES SURVEY MONUMENT TO BE SET IF REQUIRED BY COUNTY.

SEE PAGE 340

SEE PAGE 231

7' UTILITY & DRAINAGE EASEMENTS EACH SIDE OF PROPERTY LINES AS INDICATED BY DASHED LINES EXCEPT AS OTHERWISE SHOWN.

FOR COMPLETE ENG DATA SEE ORIGINAL DEDICATION PLAT IN BOOK 30, PAGE 90 OF RECORDS.  
 AMENDED DEDICATION PLAT IN BOOK 36, PAGE 21 OF RECORDS.